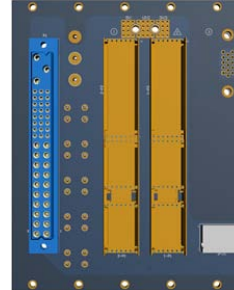


CBBKP05SNN-0x 3U CompactPCI PlusIO Backplane

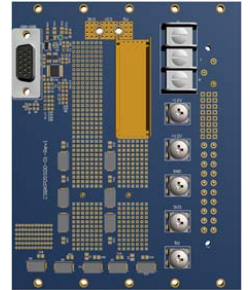
GENERAL SPECIFICATIONS

Dimensions (WxH)	102.14 x 128.7 mm
Eurocard form factor	3U height / 20 TE
Nr of Layers	14
PCB thickness	4 mm
PCB material	PCL-370HR
cPCI PlusIO System Slot	One
cPCI Peripheral Slot	One, supports P2 rear I/O with AB-type shroud
cPCI Bus	32-bit/33MHz
cPCI Serial Slot	One slot, support PCIe x4, SATA
V (I/O)	3V3 or 5V selectable, factory default is 5V
Power Supply Slot	The PSU requires two slot / 8TE Connector: One 47 pin Positronic connector
Input Power Connector	Molex: 38720-7503
Other Connectors	CBBKP05SNN-01 - Power terminal for 5V, 3.3V, +12V, -12V and Ground - DSUB15: VGA and USB 2.0 (to be used only with CPCI-3511 from Adlink Technology) CBBKP05SNN-02 - EPT Power terminal (910-60045) for 5V, 3.3V, +12V, -12V and Ground

Front

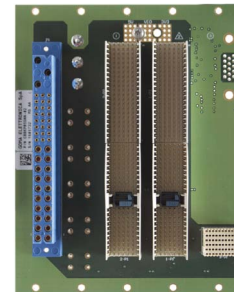


Rear

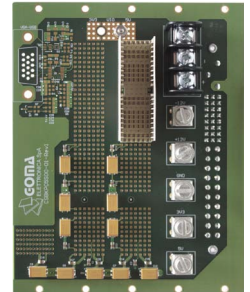


CBBKP05SNN-01

Front

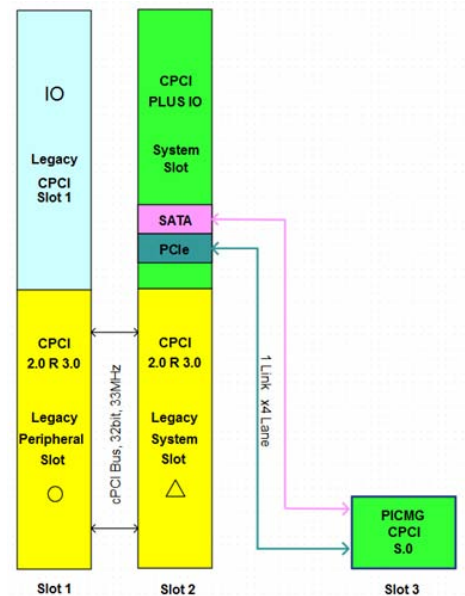


Rear



CBBKP05SNN-02

Layout



ORDERING INFORMATION

CBBKP05SNN-01	3U 20TE CompactPCI PlusIO backplane with rear VGA and USB; suitable for left 3U 8TE CompactPCI PSU
CBBKP05SNN-02	3U 20TE CompactPCI PlusIO backplane suitable for left 3U 8TE CompactPCI PSU